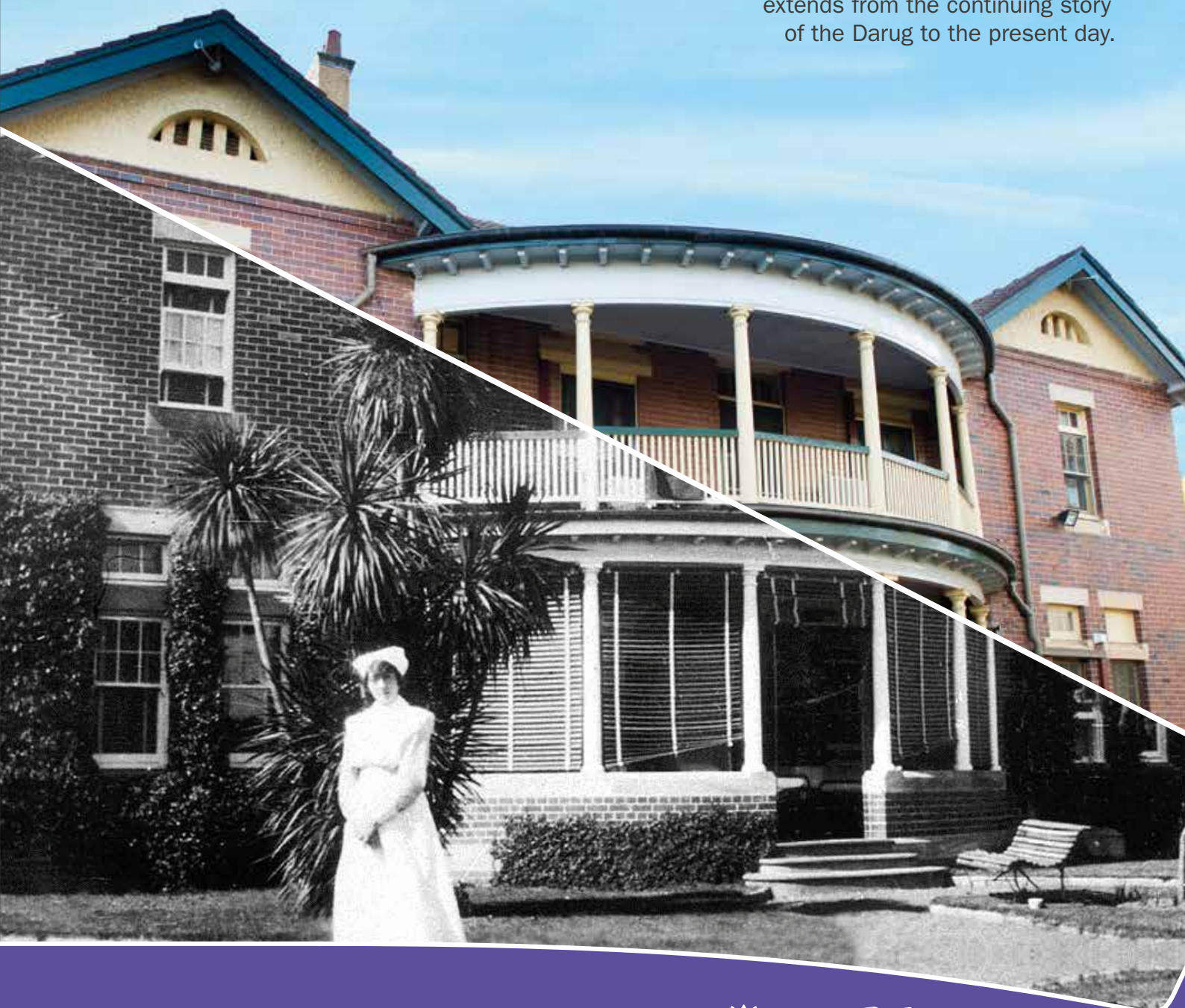


Parramatta North

Urban Transformation

Heritage snapshot

A place with a rich history that extends from the continuing story of the Darug to the present day.





The Clock Tower on the corner of the Former Male Asylum Ward 1 (C101) Cumberland Hospital (East Campus) site.

UrbanGrowth NSW will retain and conserve the buildings and landscapes of heritage significance in the Parramatta North Urban Transformation Area.

The significant history and heritage of the place will also be celebrated through interpretation.

CONTENTS

OVERVIEW	1
CUMBERLAND HOSPITAL (EAST CAMPUS)	10
PARRAMATTA GAOL	23
NORMA PARKER CENTRE/KAMBALLA SITE	34

This is a summary prepared by Tanner Kibble Denton Architects, lead heritage consultants to UrbanGrowth NSW for the Parramatta North Urban Transformation Program. Detailed heritage information will be available in the Parramatta North Historic Sites Conservation Management Plan. UrbanGrowth NSW acknowledges the information provided by people and organisations connected with the site including Health NSW, Parragirls and Parramatta Female Factory Friends.

OVERVIEW



The former Visitors and Administration Block (C112), Cumberland Hospital (East Campus) site.

The Parramatta North Historic Sites are places of exceptional heritage significance for the people of Parramatta, the state of New South Wales and Australia



An 1824 coloured etching of Parramatta from near Mays Hill by Joseph Lycett. Source: National Library of Australia

The Parramatta North Historic Sites have a rich and varied past. The sites have Aboriginal connections to land up to the present day and can tell us much about the early development of Parramatta, New South Wales and Australia. They also illustrate the changing community attitudes to moral and social reform, welfare and the treatment of mental illness.

Aboriginal people maintain a strong spiritual and cultural connection with Parramatta. For more than 20,000 years it was home to the Burramatta clan of the Darug.

Parramatta is the second oldest British settlement on mainland Australia. Agricultural and industrial enterprises established here were essential to the colony's survival and development in the early 19th Century. Archaeological evidence of Charles Smith's farm (1792-c1803), the upper dam and water races of the first Government water-powered mill on mainland Australia (1799-c1804) and of the more successful mill established by the Reverend Samuel Marsden (1812-c1838) may survive.



An 1837-39 watercolour of the Parramatta River by Conrad Martens looking west towards Parramatta. Source: Sydney Living Museums

From 1821 the area has been occupied by government institutions devoted specifically to caring for the vulnerable, destitute and people experiencing mental illness. It was also a place where convicted criminals were incarcerated. It is the only place in NSW where three colonial era institutions – namely the Parramatta Female Factory, Parramatta Gaol and Roman Catholic Orphan School – were located contiguously and where government-managed institutional uses have been maintained into the 21st Century.

The institutions were founded and operated with benevolent intentions. However, many of those adults and children confined within them suffered harsh and at times brutal treatment, neglect and discrimination.

Together the sites demonstrate the extent to which attitudes to social welfare and reform have evolved since the early 19th Century to the present day.

The Parramatta North Historic Sites incorporate a complex layering of built and landscape components and archaeology that demonstrate the changing philosophies in design and layout of welfare institutions, mental health facilities and prisons. It is an institutional landscape of great variety defined by walls that divide the sites into a variety of precincts.

The Parramatta North Historic sites have historical and visual associations with adjoining sites linked by the Parramatta River including Old Government House

and the Domain (Parramatta Park), which is of State, National and World Heritage significance and with Wisteria Gardens and Glengarriff House (of State significance). Collectively this broader assemblage of historic sites represents one of the richest cultural heritage areas in Australia.

The Parramatta North Historic Sites also have outstanding scenic value and form a prominent focal point in the local townscape.

The surviving fabric (landscape, buildings, structures and archaeology) and large body of records documenting the area's development offer an important educational and interpretive resource.

ABORIGINAL HISTORY

The Parramatta North Historic Sites can tell us much about Aboriginal connections to land up to the present day.

The Aboriginal people who occupied the Parramatta North area were the Burramatta clan of the Darug. There were at least 13 Darug clans united by a common language and strong kinship ties and they were skilled hunter/fisher/gatherers. The word burra means eel whilst the word matta means creek or river and described the name of the country. The suffix 'gal' (man) or 'galleon' (woman) was added to describe a man or woman from Burramatta. Initially Parramatta was named Rose Hill by Governor Phillip, with the name 'Parramatta' (a derivation of Burramatta) being formally adopted in 1792.

The Burramatta clan consisted of between thirty to sixty people who moved through their territory using seasonal routes to access food, shelter and other resources necessary for survival as well as ceremonial sites. Generally people camped, travelled, foraged, fished and hunted in smaller, extended family groups, coming together at times with the larger clan members and other Darug clans for ceremonies and trade. They relied on an extensive knowledge of their land and its resources and the acquisition of diverse skills essential to their survival in an environment that could be unpredictable.

The land around the Parramatta River provided the Burramatta clan with diverse plant and animal resources. The saltwater river and fresh water streams provided a rich environment where eels, fish, turtles, crayfish, shellfish and molluscs could be caught or collected.

Like other clans living along the river, the Burramatta people made canoes from which to fish or for transport. The shallow-draught water craft made of bark, two to three metres in length were skilfully manoeuvred around the river. Bangalay (*Eucalyptus botryoides*) and species of Stringybark (*Eucalyptus agglomerata*) are thought to have been used for canoe



Aborigines hunting waterbirds, Joseph Lycett, 1817. Source: National Library Australia

construction. Trees in Parramatta Park bear scars where bark was removed for making canoes. The Burramatta made a variety of tools from stone and timber.

The historic record indicates that Parramatta North and the Government Domain (now Parramatta Park) were a focal point of post-contact interaction between Aboriginal people and the Colonial Government. Parramatta Park became the site of important contact between Aboriginal people and the colonists. Maugoran, a Burramatta elder, advised Governor Phillip that he was not happy about the number of white settlers at Rose Hill. Other Aboriginal people who visited Rose Hill with Governor Phillip included Bennelong and Colebee on an expedition from Sydney in 1793 whilst Arrabannu and Bennelong became regular visitors to Rose Hill. Bigon visited Governor Phillip at his hut in Parramatta in 1791. Boorong, the daughter of Maugoran, and her brother Ballooderry continued to visit and played an important role in cross-cultural relations in the Sydney-Parramatta area. Even Pemulwuy, a Bidiagal warrior visited Parramatta Park during Governor Phillip's period of residence.

George Caley who resided in a hut in Parramatta Park befriended members of the Burramatta clan to obtain information

about plant species. In particular Moowattin became closely associated with George Caley and travelled on expeditions to Tasmania and Norfolk Island with Caley. Moowattin eventually travelled to London with Caley in 1810, returning to Sydney in 1811.

Aboriginal people today continue to maintain strong links to Parramatta North and Parramatta Park. The cultural landscape provides significant cultural evidence of Aboriginal occupation and provides a direct link to their past. The landscape is important today as a significant educational resource.

The area has been physically impacted by ongoing use and development since settlement. However, the Parramatta North Historic Sites have potential to retain subsurface evidence of Aboriginal occupation. This could demonstrate the history of Aboriginal land use patterns, resource use and subsistence activities prior to the arrival of Europeans. The area also has significance for the stolen generations detailing the history of incarceration of Aboriginal children and adults within the institutions.



A c1820 watercolour by Joseph Lycett depicting Marsden's Mill at the confluence of the Parramatta River, Toongabbie Creek and Darling Mills Creek.

EARLY COLONIAL AGRICULTURAL AND INDUSTRIAL ENTERPRISES

The first Europeans were Governor Phillip and an expedition party in April 1788 looking for suitable farming land. He established a settlement on the south bank of the river that he named 'Rose Hill' – later renamed Parramatta.

Early land grants were followed by farming operations including that of Charles Smith (1792), who established a farm on his 30 acre grant – land which now forms part of the Cumberland Hospital (East Campus) site.

In 1799 construction started on the first government water-powered mill on mainland Australia on the east side of the

river (to the south of the Norma Parker Centre/Kamballa site). Water races, or constructed water channels, extended from an upper dam on Darling Mills Creek across land that now forms part of the Parramatta Gaol, Cumberland Hospital (East Campus) and Norma Parker Centre/Kamballa sites. The mill failed and ceased operations soon after it was completed in 1804.

In 1810-1812, a more successful mill was constructed by Reverend Samuel Marsden at the confluence of the Parramatta River, Darling Mills Creek and Toongabbie Creek. It operated until about 1838. Marsden also established a vineyard on land that he bought from Charles Smith and built a

house for his daughter, Mrs Betts – this house was later used as a residence for the Medical Superintendent of the Parramatta Lunatic Asylum.

Physical evidence of the pre-institutional uses of the Parramatta North Historic Sites is limited to the potential archaeology – no above-ground buildings or structures remain.

An 1844 plan of Parramatta by W. Meadows Brownrigg showing the Female Factory (established 1821), Parramatta Gaol (established 1842) and the Roman Catholic Orphan School (established 1844). Samuel Marsden's 36 acre estate known as 'Mill Dam Farm' and later 'The Vineyard' is also evident.

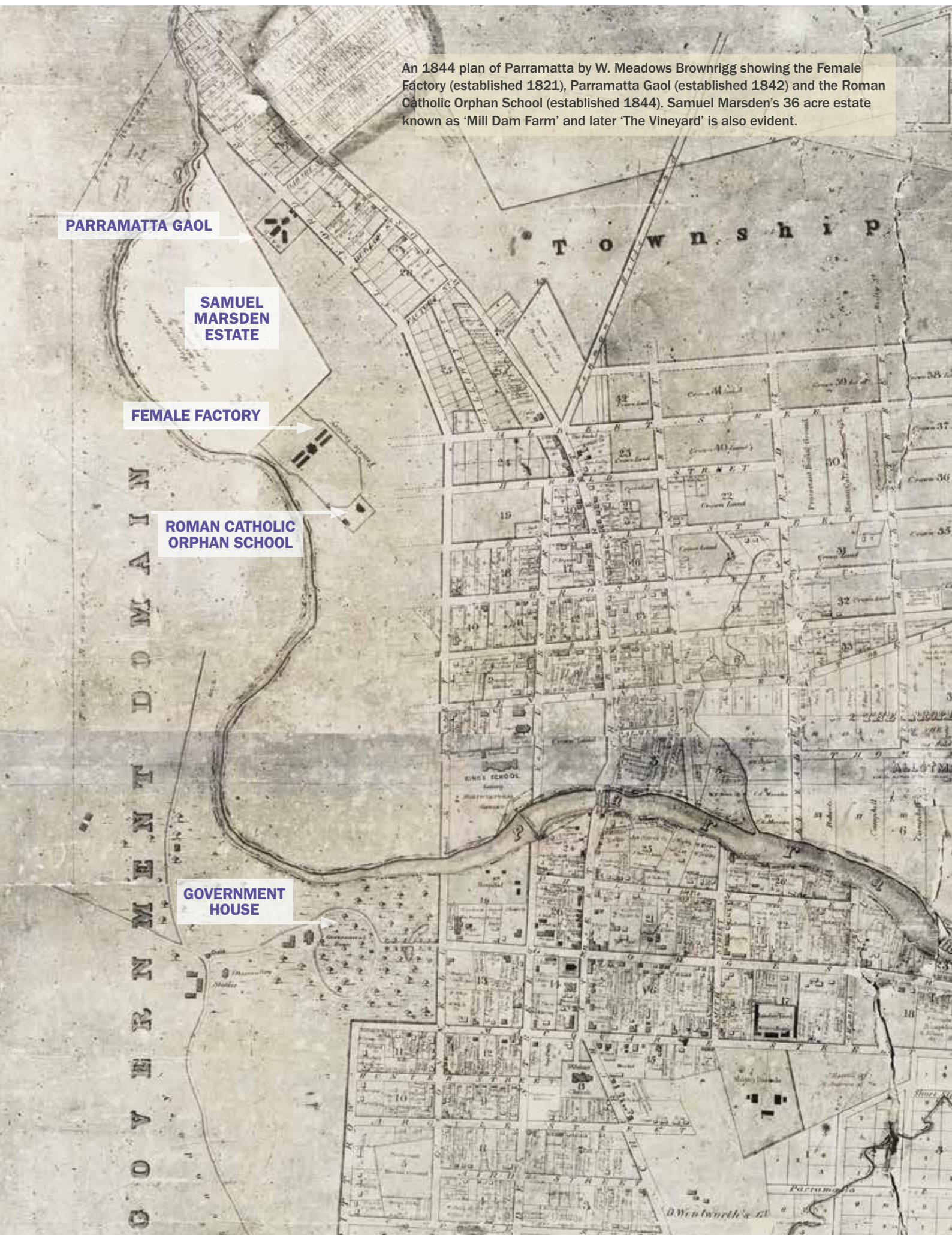
PARRAMATTA GAOL

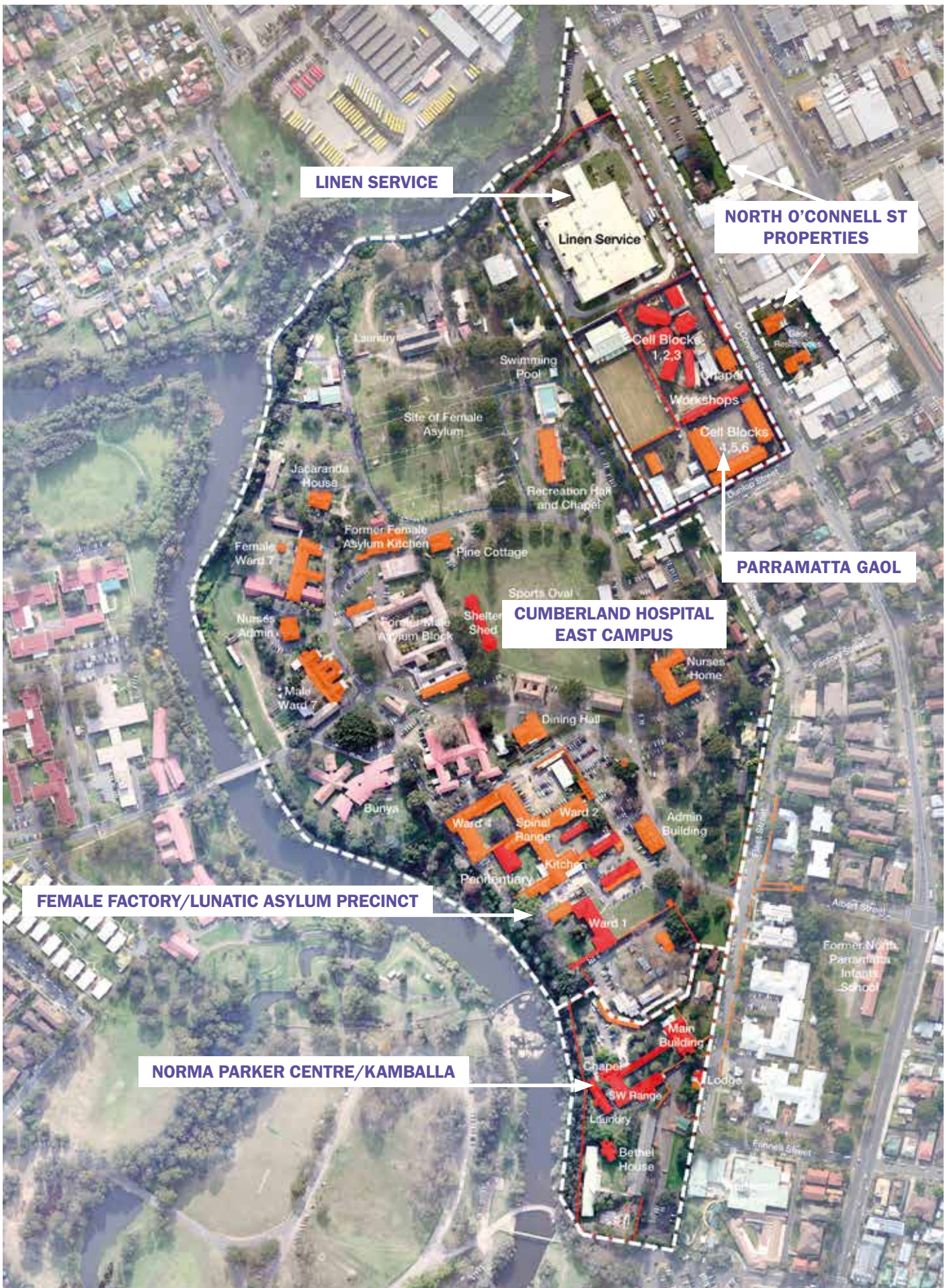
SAMUEL
MARSDEN
ESTATE

FEMALE FACTORY

ROMAN CATHOLIC
ORPHAN SCHOOL

GOVERNMENT
HOUSE





- EXCEPTIONAL HERITAGE SIGNIFICANCE
- HIGH HERITAGE SIGNIFICANCE

A diagram illustrating the Parramatta North Historic Sites today incorporating the Cumberland Hospital (East Campus), Parramatta Gaol and Norma Parker Centre/Kamballa sites.

PARRAMATTA NORTH CHRONOLOGY

THE BURRAMATTA PERIOD

Burramatta tribe of the Darug people known to inhabit the region for at least 20,000 years.

1788
Parramatta established as convict town and farm. Government navigation of river by boat limited to near the east end of present-day George Street.

1792
Charles Smith farm

1799 to 1804
Mill and water races constructed. First water mill recorded in Australia.

1803 to 1840
Samuel Marsden establishes estate.



1818
Construction of Female Factory begins.

1821
Female Factory occupied including only 'lying in' hospital – the first women's health service in Australia.

1848
Female Factory closes and becomes The Convict, Lunatic and Invalid Establishment before becoming the Parramatta Lunatic Asylum in 1850. Provision of mental health care has continued on site until the present day.

1866
Marsden's Estate purchased for expansion of the hospital.

1878
Renamed Parramatta Hospital for the Insane.

1883
Female factory dormitory and some buildings demolished and re-used to build Ward 1 of the Male Asylum.

1780 1790 1800 1810 1820 1830 1840 1850 1860 1870 1880 1890



1850
Original laundry and West Range built.

1841 to 1844
Roman Catholic Orphan School constructed and occupied.

1882
Last major alteration and addition to the Roman Catholic Orphan School

1867
Substantial alterations and additions
1887
Former orphanage adapted for the Parramatta Industrial School for Girls.

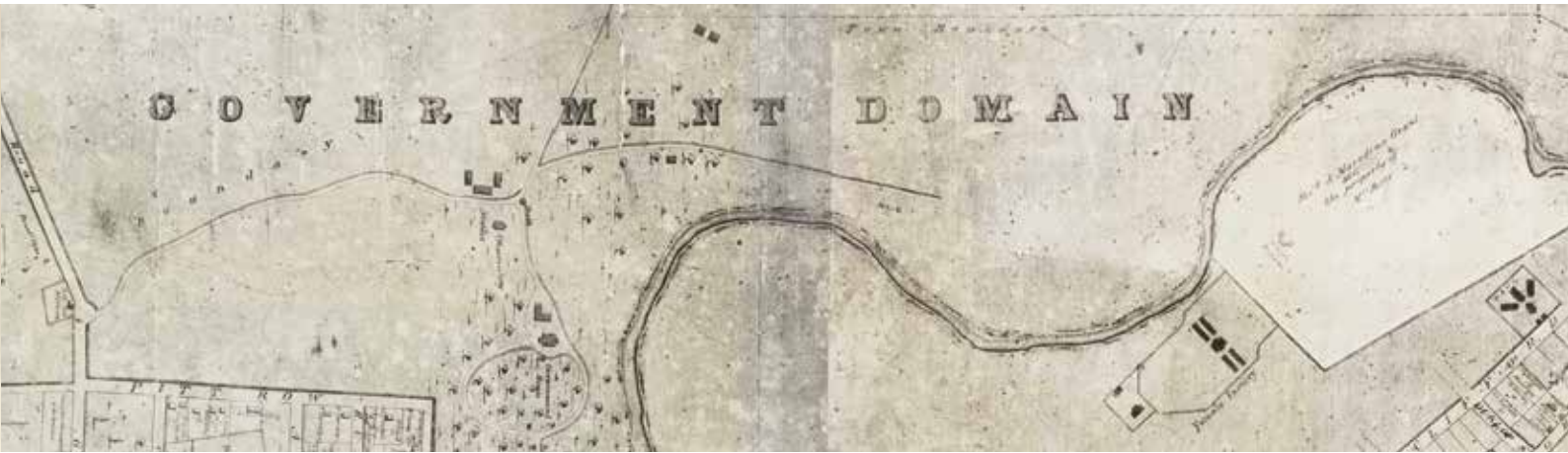


1837 to 1844
construction of Parramatta Gaol.

1861 to 1866
First extension of the gaol.

1880s and 1890s
second and third extensions to the gaol.

PARRAMATTA



CUMBERLAND HOSPITAL

1916

Renamed Parramatta Mental Hospital.

1962

Renamed Parramatta Psychiatric Centre.

1974

Northern part of site transferred to Department of Corrective Services.

1983

Renamed Cumberland Hospital



1900 1910 1920 1930 1940 1950 1960 1970 1980 1990 2000 2010 2020

1923

Parramatta Girls Training Home closes

1912

Parramatta Girls Training Home established in former Hospital (Bethel) and remainder renamed the Parramatta Girls Training School.



1980

Norma Parker Detention Centre for women established.

1997

Norma Parker Periodic Detention Centre established.

1974 to 1975

Parramatta Girls Home closes and Kamballa (Girls) and Taldree (Boys) Children's Shelter established.

2010

Norma Parker Periodic Detention Centre closes.

CENTRE

1902

Governor's Residence and Deputy Governor's Residence constructed.

1898

Parramatta Gaol Farm established.



1975

Parramatta Linen Service opened on Former Gaol Farm.

2011

Parramatta Gaol closes.

2014

Deerubbin Aboriginal Land Council successfully claims the gaol complex under the NSW Aboriginal Land Rights Act 1983.

1973

Residences adapted to periodic detention centre.

GAOL

CUMBERLAND HOSPITAL (EAST CAMPUS)



Cumberland Hospital site

The Cumberland Hospital (East Campus) site is of exceptional heritage significance as an institutional complex that has been in continuous use since 1821.



A view of the three-storey dormitory building at the centre of the Female Factory complex prior to its demolition in the 1880s.
Source: Parramatta Heritage Centre

The site demonstrates changing philosophies and government policies relating to convict women and then mental health care in NSW over a 195 year period.

It is the site of the first purpose-built Female Factory in Australia, established to confine and employ female convicts. The site has retained the most intact above-ground evidence of original built form of any female factory in Australia and is able to demonstrate the classification system which developed within these early colonial institutions.

The site is representative of mental hospitals in NSW and it has played a significant role in the provision of mental health care in NSW. Its cultural landscape provides evidence of the changing attitudes in mental health care since 1850 and retains examples of the creative expressions of patients through landscape features, plantings and artwork.

The cultural landscape is also of aesthetic significance for its important contribution to the group of historic sites on the Parramatta River in particular

Old Government House and the Domain (Parramatta Park) and Wisteria Gardens.

Apart from evidence of the original layout and buildings of the Female Factory, the site is likely to retain archaeological evidence of the mill races, or constructed water channels, associated with the first Government water mill on mainland Australia as well as Samuel Marsden's Mill, which would demonstrate early free settler agricultural activities during the colonial period.

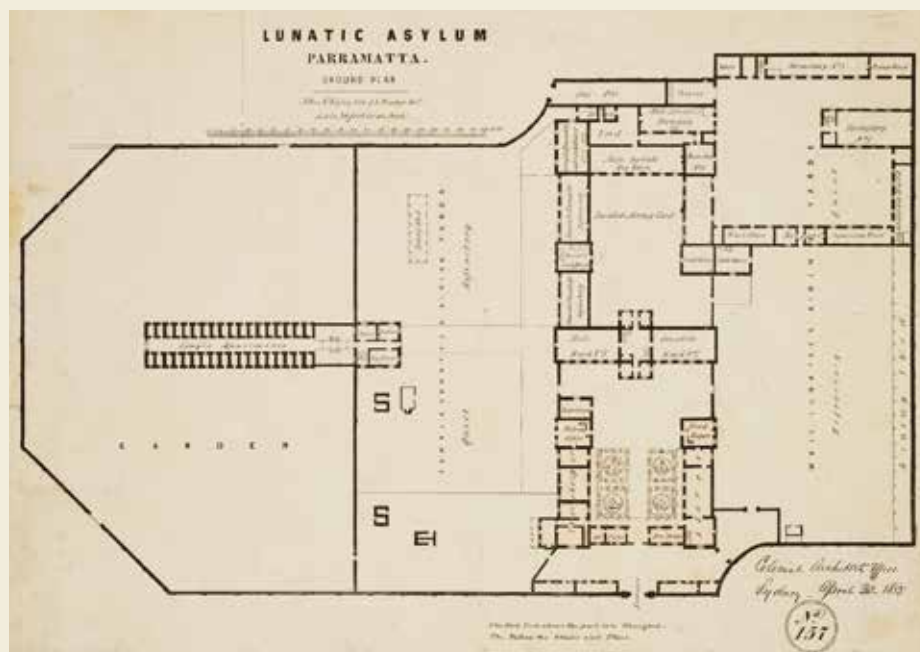


1

1. A c1910 photo of the Staff Dining Room and Kitchen.
2. A 1924 photo of the Admission Block, Hospital for the Insane.
3. 1950 photo of nurses outside the Nurses' Home.

Construction of the Female Factory on the site was commissioned by Governor Macquarie in 1818 and the first female convicts occupied the complex in 1821. Early additions included the 3rd Class Penitentiary (c1826) and the three-storey Solitary Cell Block Enclosure (1839).

Designed by the emancipated convict Francis Greenway based on a layout provided by Samuel Marsden, the Female Factory was the destination of all unassigned convict women sent to the colony of New South Wales. It played an important role in the provision of medical care for the wider female population and was an assignment depot, refuge, workhouse, a marriage bureau, hospital and prison.



4. The Parramatta Lunatic Asylum in 1855 – many of the Female Factory buildings and structures were retained and adapted, and survived until their eventual demolition in the 1880s.



An estimated 5,000 or so convict women sent to the colony spent time at the Parramatta Female Factory. The institution was frequently overcrowded with numbers peaking in 1842 with 1203 women and 263 children in residence.

The need to accommodate female convicts waned due to the cessation of transportation to NSW in 1840. However, a small number of invalid convicts and convicts with mental illnesses remained. In 1848 it was renamed The Convict, Lunatic and Invalid Establishment, which operated until 1856.

In 1850 a portion of the site was designated the Parramatta Lunatic Asylum,

which later incorporated the 'Invalid Establishment' in 1856.

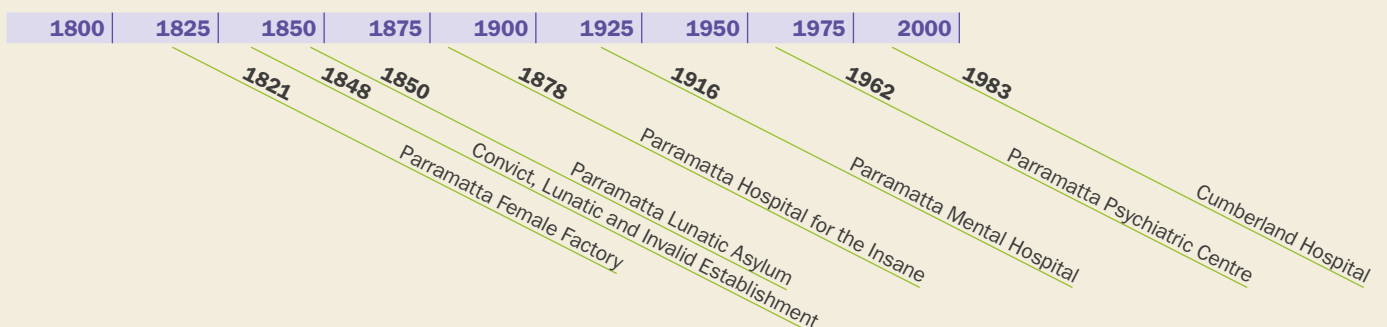
The growing number of mental health patients required additional accommodation. From 1870 'temporary' timber wards known as the Male and Female 'Weatherboard Divisions' were constructed to the north of the main complex on Samuel Marsden's land purchase in 1866. Additional stone and brick buildings were also constructed in the original complex.

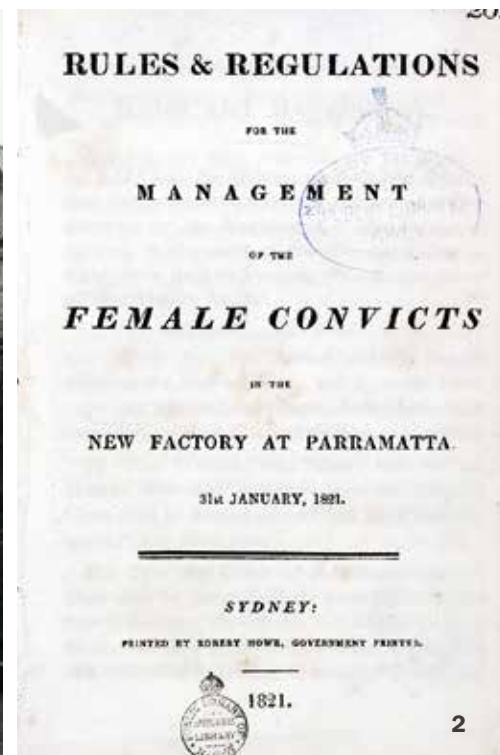
As a result of the passing of the *Lunacy Act* in 1878, the institution was renamed the Parramatta Hospital for the Insane. Completion of the Female Weatherboard

Division in 1883 allowed for relocation of all of the living accommodation from the former Female Factory buildings. Some buildings were demolished – including the central three-storey dormitory building. The stone from the demolished buildings was used to construct a new Male Asylum – Ward No.1. A large number of other buildings were also constructed over the next few years and about 20 acres of the site put under cultivation for orchards – the majority of sandstone buildings on the site today were built at this time.

In the early 20th century a more 'community homes' environment was preferred to the old 'institutional' design of the complex.

CHRONOLOGY





1. Looking west through the Former Female Factory site towards the river, c1900.
2. Rules and Regulations for the Management of Female Convicts (1821).
3. View of the landscaped garden established within the former Female Factory complex in January 1895.
The southeast range of the Female Factory is at left and Male Asylum ward no. 1 is at the rear.

This led to the construction of a new visitor's and administration block at the entry to the former Female Factory followed by separate admissions blocks for men and women and a separate administration building in 1909.

In 1916, the institution was renamed the Parramatta Mental Hospital reflecting further changes in psychiatric care. In 1923, Parramatta was the second-largest mental health institution in New South Wales.

In 1936 the former Male Weatherboard Division buildings were largely replaced by new brick wards – the Female division buildings were retained until the late 1960's. Also in 1936, there was a mutiny of about 50 patients that attacked staff because their tobacco rations had been withheld.

By 1940, additions made to the gardens provided useful employment for patients to grow flowers and vegetables.

By the 1950s the plantings across the hospital site had matured but most of the farm land uses had started to dwindle.

In 1962, the hospital was renamed the Parramatta Psychiatric Centre. The former Female Weatherboard Division buildings were finally demolished in 1970 when replacement wards on the west campus were completed.

In 1974, the land occupied by the Female Weatherboard Division was transferred to the Department of Corrective Services.

In 1983 the hospital was renamed the Cumberland Hospital. In the following years, on-site accommodation for psychiatric patients was gradually moved elsewhere and today the hospital largely accommodates day-care facilities and administrative services.



4. The bridge over Parramatta River linking the Parramatta Mental Hospital with the farm land on the west side of the river (1920-1927).



1. An 1880s photograph looking back towards the entry to the former Female Factory, the entry was demolished in 1910. Source: State Library of NSW
2. An 1880s photograph of the entry to the Parramatta Hospital for the Insane (former Female Factory and Parramatta Lunatic Asylum). Source: Parramatta Heritage Centre
3. The interior of a ward of the Female Weatherboard Division in 1924 – a photograph taken by Nurse Mable Balmer.

SIGNIFICANT BUILDINGS AND OTHER STRUCTURES

All 25 buildings (or groups of buildings) of Exceptional or High significance are to be retained, restored and adapted. They are listed below using their original/earlier names:

- C 52** Male Admissions Ward/Ward 7 (1909)
- C 53** Administration Block (1909)
- C 55** Female Admissions Ward/Ward 7 (1909)
- C 57** Nurses' Quarters/Jacaranda House (c1900)
- C 59** Female Asylum Kitchen Block /Ward 9 (c1881-1883)
- C 59a** Female Asylum Shelter Shed (c1910s)
- C 60** Assistant Medical Officer's Cottage/Pine Cottage (1880s)
- C 63** Male Asylum Hospital and Day Room (Late 1890s)
- C 65** Male Asylum Kitchen, Bakehouse and Store (c1878)
- C 66** Male Asylum Shelter Shed/ Cricket Pavilion (1880)
- C 70** Staff Dining Room and Kitchen (1909)
- C 75** Recreation Hall and Chapel (1886-1892 + 1967 additions)
- C 83** Nurses' Home No. 1 (c1928)

- C 100a** Female Shelter Shed and Store (c1860s but significantly modified)
- C 101** Male Asylum Ward 1 (1883-1885)
- C 102** Male Asylum Ward 1 Dining Room (1883-1885)
- C 103** Female Factory – South East Range (c1821)
- C 104** Asylum Main Kitchen (1892)
- C 104a** Ward 9 and Bathrooms (c1892)
- C 105** Female Factory – Penitentiary Dormitory (c1826)
- C 105a** Ward 8/'Wet and Dirty' Ward (late 1890s)
- C 106** Ward 4 West and North Range (1889-1901)
- C 107** Wards 2 and 3, Spinal Range (c1876)
- C 109** Ward 2 including Annex (1895 + later additions)
- C 110** Male Asylum Shelter Shed (c1860)
- C 111** Female Factory – North East Range (c1821)

- C 112** Visitors and Administration Block (c1910)
- C 114** Dead House (c1870s)
- C 115** Female Factory Solitary Cell Block Perimeter Walls (1839)
- C 116** Female Factory/Asylum Compound Walls (1880s)
- C 117** Asylum Wall Remnants (1850s-1890s)
- C 118** Asylum Privy and Wash House Remnants (1870s)

Significant cultural landscape plantings and features include mature plantings, sandstone kerbs and gutters, retaining walls and garden walls and the water fountains.

The site also has potential to contain highly significant historical archaeology from the Female Factory and pre-institutional elements such as the water races associated with the Government mill, Charles Smith's farm and Mrs Betts' House.



C 52
Male Admissions Ward/Ward 7
(1909)



C 59a
Female Asylum Shelter Shed
(c1910s)



C 53
Administration Block
(1909)



C 60
Assistant Medical Officer's
Cottage/Pine Cottage (1880s)



C 55
Female Admissions Ward/
Ward 7 (1909)



C 63
Male Asylum Hospital
and Day Room (Late 1890s)



C 57
Nurses' Quarters/Jacaranda House
(c1900)



C 65
Male Asylum Kitchen, Bake House
and Store (c1878)



C 59
Female Asylum Kitchen Block/
Ward 9 (c1881-1883)



HIGH HERITAGE SIGNIFICANCE

The significant buildings and structures to be retained, conserved and adapted.

SIGNIFICANT BUILDINGS AND OTHER STRUCTURES CONTINUED



C 100a
Female Shelter Shed and Store
(c1860s but modified)



C 101
Male Asylum Ward 1
(c1883-1885)



C 102
Male Asylum Ward 1 Dining Room
(c1883-1885)



C 103
Female Factory – South East Range
(c1821 + later additions)



C 104
Asylum Main Kitchen (1892)



C 104a
Ward 9 and Bath Rooms (c1892)



C 105
Female Factory – Penitentiary
Dormitory (c1826)



C 105a
Ward 8/Wet and Dirty Ward
(Late 1890)



C 106
Ward 4 – West Range (c1889)



C 106a
Ward 4 – North Range (1901)



C 107
Wards 2 and 3/Spinal Range
(1876)



C 109
Ward 2 including Visitor's Annex
(1895 + later additions)



C 110
Male Asylum Shelter Shed (c1860)



C 111
Female Factory –
North East Range (c1821)



C 112
Visitors and Administration Block
(1910)



- EXCEPTIONAL HERITAGE SIGNIFICANCE
- HIGH HERITAGE SIGNIFICANCE
- DAM

The significant buildings and structures are to be retained, conserved and adapted

These significant buildings, remnants and structures are to be retained and conserved.



C 114

The 'Dead House' (c1870) at the entrance to the Solitary Cell Block Enclosure.



C 115

The sandstone perimeter wall of the Solitary Cell Block Enclosure.



C 117

A section of sandstone wall (c1880s) that extended down a 'ha-ha', since infilled.



C 117

A remnant of the (c1870s) Lunatic Asylum wall (original sandstone clad with brickwork).



C 118

The remnants of the c1870s privies and wash house that formed part of the Lunatic Asylum.

SIGNIFICANT BUILDINGS AND OTHER STRUCTURES CONTINUED



C 66

Male Asylum Shelter Shed
/Cricket Pavilion (1880)



C 75

The Recreation Hall and Chapel
(1886-1892 + 1967 additions)



C 83

Nurses Home No.1 (c1928)

The significant buildings and structures to be retained, restored and adapted. The footprint of the 1883-1970 Female Weatherboard Division Buildings is shown.

- EXCEPTIONAL HERITAGE SIGNIFICANCE
- HIGH HERITAGE SIGNIFICANCE
- LAND CLAIM AREA
- CUMBERLAND HOSPITAL (EAST CAMPUS) STUDY AREA (INCORPORATES LAND TRANSFERRED IN 1974)



CULTURAL LANDSCAPE

The Cumberland Hospital (East Campus) site has a significant and distinctive cultural landscape character derived from its functional purpose as a place of detention, asylum and institutional health care, providing evidence of the changing uses and development phases of the site from the early 19th century to the present day.

The outstanding heritage significance of the site includes the use of plantings, settings of buildings and views as important adjuncts in the treatment of psychiatric patients. The spaces between the buildings and their inter-relationships, together with views and vistas to, from and within the site, the roads, pathways, walls and ornamental structures as well as planting layouts and plant species diversity and maturity all contribute to the values of the cultural landscape of the precinct includes a highly significant assemblage of Australian and introduced palm species including magnificent specimens of *Jubaea chilensis* (Chilean Wine Palm), a species rare in cultivation in Australia and vulnerable in its native South American habitat. Other important plantings with aesthetic, historical and scientific values include camphor laurels, jacarandas, tall Araucarias and a number of Australian rainforest tree species including *Ficus macrophylla* (Moreton Bay Fig), *F. rubiginosa* (Port Jackson Fig) and *F. microcarpa* var. *hillii* (Hill's Weeping Fig), *Flindersia australis* (Crow's Ash), *Brachychiton acerifolius* (Illawarra Flame Tree) and *Stenocarpus sinuatus* (Queensland Firewheel Tree).

The walled yard of the Solitary Cell Block Enclosure includes several magnificent specimens of *Platanus x acerifolia* (London Plane), with an outstanding specimen of *Pinus roxburghii* (Chir Pine) nearby. These are complemented by a variety of other tree and shrub species planted across the precinct, including eucalypts, cypresses and brush box.

The site contains fountains, kerbs and other structures built by patients as rehabilitation activities. Some of these were recycled from materials used on site.



Araucaria and palm species within the Female Weatherboard Division area.



Highly significant plantings of palm species along Greenup Drive, including an outstanding specimen of *Jubaea chilensis* (Chilean wine palm) which is rare in cultivation in Australia. (Photo: MUSEcape)



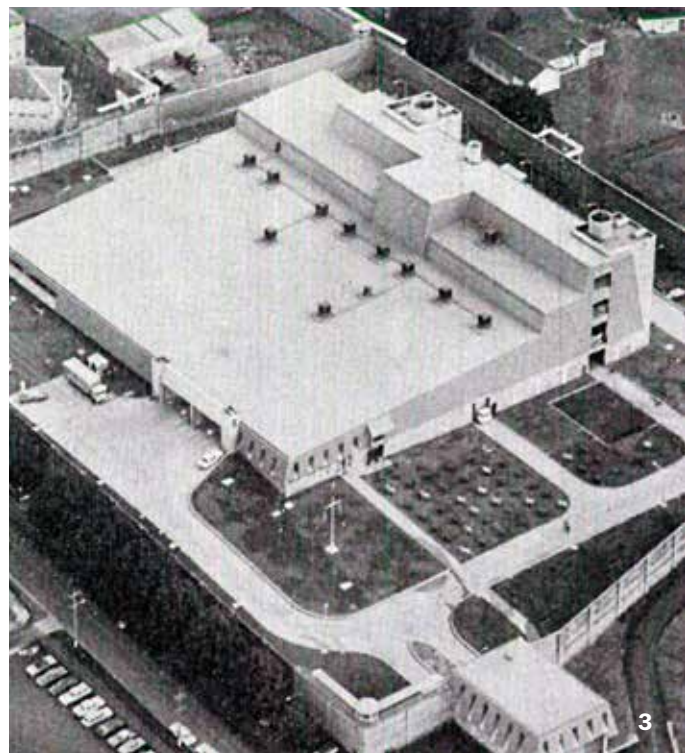
The Cricket Pavilion (C 66) and some of the mature plantings of the Cumberland Hospital (East Campus) site including tall Araucaria, spreading fig and palm. (Photo: MUSEcape)



c1840 View from Mays Hill

PARRAMATTA GAOL





Originally constructed in 1842, Parramatta Gaol is a rare surviving example of a pre-1850 gaol and is representative of the maximum security gaols constructed in NSW during the 19th century. It is one of three government institutions established between 1821 and 1844 devoted to social welfare and reform.

The existing layout, buildings and fabric of the Gaol provide evidence of the conditions in which the prisoners lived during their incarceration and demonstrate the evolution of the prison system and changing policies relating to incarceration and reform during the 19th and 20th centuries.

The gaol has aesthetic significance derived from the quality of architectural design and construction, the enclosed spatial qualities of the site and the character established by the use of sandstone building materials. The high forbidding walls have symbolic value but are also an important feature in the Parramatta North streetscape.

The gaol housed some of NSW most notorious prisoners including convicted bank robber and prison escape artist, Darcy Dugan, convicted organised crime figures, convicted murderer Kevin Gallagher, convicted rapist and murderer Lenny Lawson and notorious criminal Arthur ‘Neddy’ Smith.

Parramatta Gaol is the third gaol to be constructed in Parramatta. The first, built of timber logs and thatch on the north side of the Parramatta River in 1796, in what is now Prince Alfred Park, was initiated in response to robberies taking place in the colony – it burned down in 1799. Its replacement was constructed in 1803 – it was also damaged by fire in 1807. By 1831 the second gaol was in very poor condition and Government Architect Mortimer Lewis was instructed to prepare plans for a new gaol in 1833.

Construction of the sandstone perimeter walls of Parramatta Gaol began in 1836 using stone won from the quarry on Fleet Street. Construction of the three cell blocks (1, 2 and 3 wing), radiating from the Governor’s House and chapel were not completed until 1842, at which time the gaol was gazetted a ‘gaol, prison and house of correction’. The gaol housed both male and female prisoners.



1 & 2. c1920s views of the Parramatta Gaol Farm. Source: National Library Australia
3. The Piggery, 1930. Source: National Library Australia

Construction of the gaol featured a number of design changes including creation of a central open space from ground floor to the roof of two of the cell wings to improve both ventilation and surveillance. Two-thirds of the single cells were also amalgamated to create double cells that could house 6 instead of 2 prisoners thereby increasing the amount of accommodation. An additional floor was also added to each wing.

An economic depression and the cessation of transportation to NSW, delayed the completion of the guard house until 1844. Separate male and female hospitals were constructed during 1858-1859. However, the female hospital was not needed for long as the female prisoners were transferred to Darlinghurst Gaol and Cockatoo Island (Bilolea) in 1863. 100 male prisoners transferred from Darlinghurst gaol took up the vacated accommodation in 3 Wing (now known as 1 Wing).

By 1861 the gaol included a self-contained female side with cell blocks, yard, shelter shed, kitchen, laundry and hospital. There was also a mechanics' yard for blacksmiths and carpenters, a hard labour yard for stonecutters and a yard for males committed for trial. The latter contained the subterranean water tank and was flanked by the men's cookhouse. Although facilities had improved, they were still inadequate. There were no permanent baths for the prisoners and in heavy rains the cesspools located just outside the gaol walls overflowed and polluted the Parramatta River dam erected to supply the town with water.

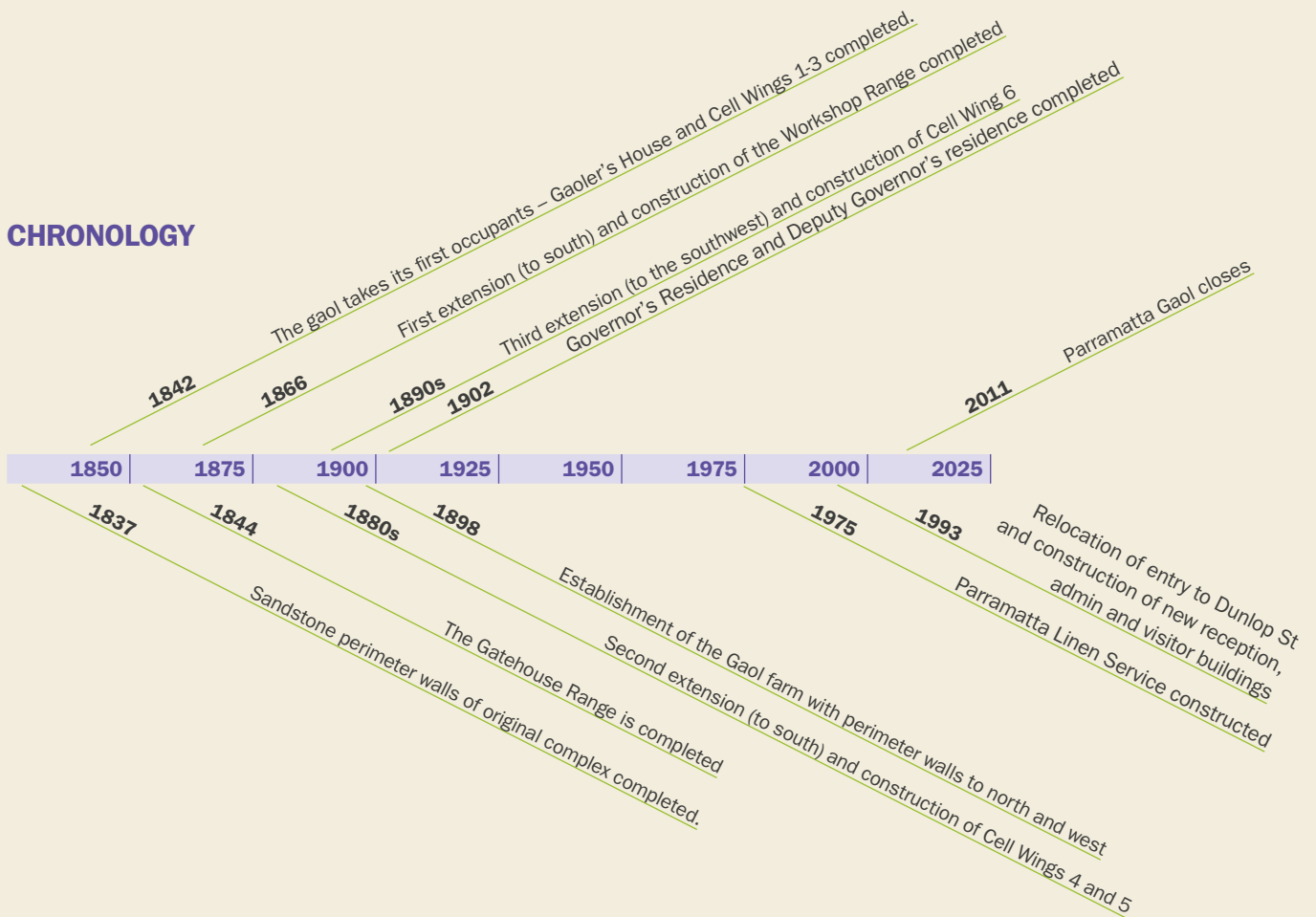
Works in the first half of the 1860s extended the gaol to the south to accommodate additions to 1 Wing (now 3 Wing) a new cookhouse and workshop range, dead house, warder's quarters and an open shed for stone cutters. An additional floor was added to the former female hospital and underground water tanks constructed.

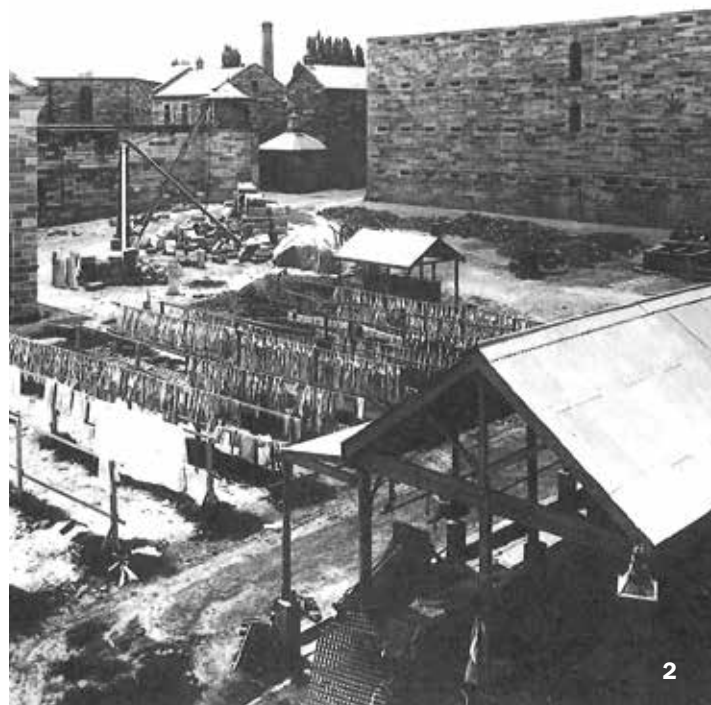
Perimeter walls around the gaol were extended three more times during the late 19th Century. In the early 1880s the gaol was extended to Dunlop Street and 4 Wing and 5 Wing constructed. 6 Wing, close to O'Connell Street, was completed in 1899 after almost a decade under construction. The court enclosed by 4, 5 and 6 Wings featured a radial 'exercise yard', also known as the 'circle' or 'bull ring' with 32 enclosed units superintended by a watch tower.

The perimeter wall was extended again to the south west in 1890. This space initially served as a work yard where prisoners cut stone for the construction of 6 Wing. The walled precinct to the north was completed by 1898 in preparation for construction of a facility to accommodate 'lunatic criminals' – people who became insane after being committed to gaol. The project was cancelled but construction of the walls continued and the area used to establish a prison farm for growing vegetables and keeping pigs.



CHRONOLOGY





1. An 1887 photograph of the Governor's House. The two storey workshop range extends beyond it in the background. Source: State Library of NSW
2. c1898 photograph of the south western extension of the Gaol. Amongst the items that can be seen are the carpenters' and masons' shop, morgue with lantern ventilator, watchtower, brush shop and end of industrial range, 6 wing nearing completion and laundry shed. Source: Kerr, James Semple, *Out of Sight, Out of Mind: Australia's Places of Confinement 1788-1988*, S.H. Ervine Gallery National Trust Australia, Sydney, 1988
3. The 'bull ring' or 'circle' in 1943, source: Department of Lands, 1943. Source: State Library of NSW
4. The interior in 1977 – it was demolished in 1985. Source: State Library of NSW

Residences were built for the governor and deputy governor in 1902 on the east side of O'Connell Street. Another parcel of land on O'Connell Street was acquired by the Prisons Department in the late 19th Century, but remained undeveloped until the 1960s.

The chapel was constructed in 1908 and by 1913 a shop for coir mat manufacturing was built. A two storey annex to 5 wing was completed in 1911 with a bathhouse on the ground floor and workrooms on the first floor. The gaol's sewerage system was also completed at this time.

Parramatta Gaol closed in 1918 due to a decline in prisoner numbers and was handed over to the Inspector General of Mental Hospitals. The gaol was stripped of equipment, furniture and saleable building materials and the west walls demolished. However, by 1922 prisoner number increased and the gaol was recommissioned – the demolished walls were reinstated in brick.

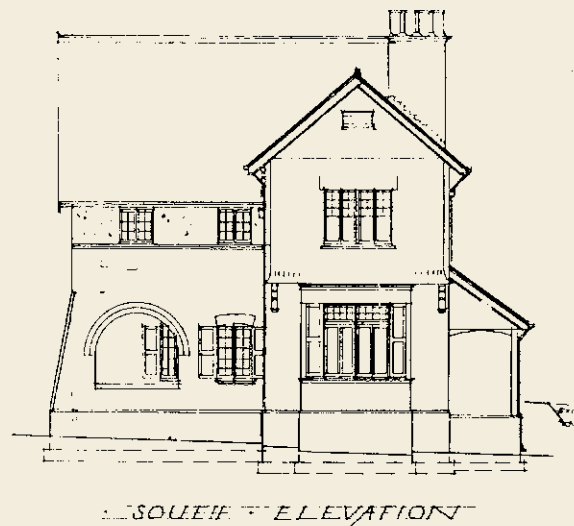
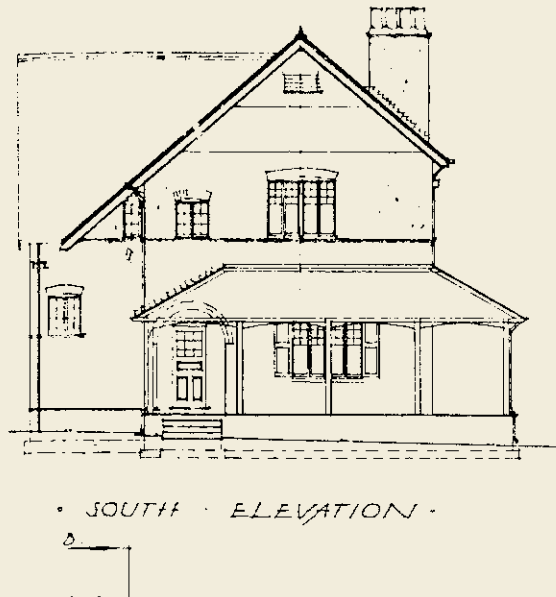
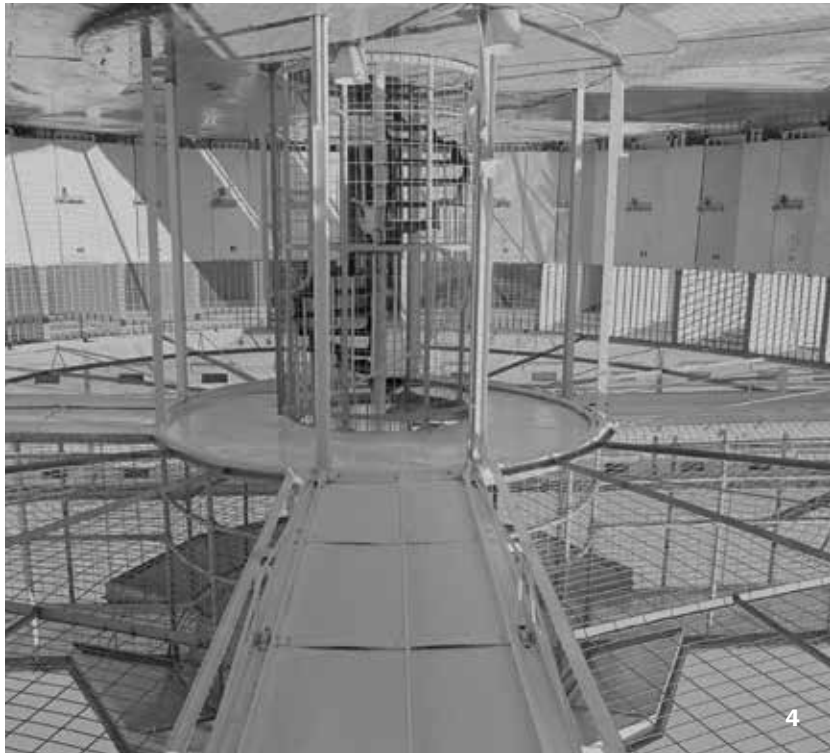
During the 1930s Parramatta Gaol was referred to as "the State's principal manufacturing gaol" and During World War II prisoners made camouflage nets and other items to assist the local war effort. After World War II endeavours were made to improve conditions for prisoners including introduction of radios and weekly films, a full time dental officer, improvements to educational and library services, mechanisation in workshops, improvements to laundry services, replacement of hammocks in cells with beds and installation of sewerage into individual cells.

In 1973, the former governor's residence and deputy governor's residence were adapted to become a periodic detention centre and the existing residences on the north O'Connell Street property constructed for the Superintendent and Deputy Superintendent. In 1975 the former gaol farm was replaced with the linen service, which was intended to be a high volume facility serving large institutions

employing trained prison staff and inmates but was transferred to the Health Commission of NSW in 1981.

In 1985 the Department of Corrective Services planned to modernise the Gaol, which would have included demolition of all buildings constructed after World War I – the redevelopment did not proceed. Instead the exercise circle was demolished and a new entry constructed on Dunlop Street. New buildings for reception, administration and visitor facilities were also constructed in 1993 and the site was renamed the Parramatta Correctional Centre.

The site closed as an institution for the reception and detention of prisoners in 1997, but reopened before being finally decommissioned as a medium-security gaol in 2011.



5. Original drawings of the front elevations of the Governor's Residence and Deputy Governor's Residence constructed in 1902 opposite the gaol on O'Connell Street.



Parramatta Gaol in 1887 photographed from near the intersection of Windsor Road and Dunlop Street. Source: State Library of NSW

SIGNIFICANT BUILDINGS AND STRUCTURES

All 23 buildings (or groups of buildings) of Exceptional or High significance are to be retained, restored and adapted. They are listed below using their original/early names:

P 01	Gatehouse Range (1842 + 1940s-1970s additions)	P 17	Cell Wing 4 (1888)
P 02	Gaoler's House/Governor's House (1842-1866 + later additions)	P 18	Cell Wing 5 (1884)
P 03	Female Hospital (1859 + later additions)	P 19	Cell Wing 6 (1899)
P 04	Cell Wing 1 (1842)	P 20	5 Wing Annex/Store (1910-1911)
P 05	Cell Wing 2 (1842)	P 21	Recreation Yard (1880s)
P 06	Cell Wing 3 (1842)	P 22	Mason's and Carpenter's Workshop (1890s)
P 07	Cell Wing Yards (1860s)	P 25a	Sandstone Perimeter and Compound Walls (1837, 1863 and 1880s)
P 08	The Cookhouse (c1865 + 1896)	P 25b	Brickwork Perimeter Wall (1922)
P 11	The Chapel (1908)	P 26	Watch Towers (1860s-1970s)
P 12	Workshop Range (1866)	P 30	Deputy Governor's Residence (1902)
P 13	The Dead House (1864)	P 31	Governor's Residence (1902)
P 14	Muster Ground (1860s)		



- EXCEPTIONAL HERITAGE SIGNIFICANCE
- HIGH HERITAGE SIGNIFICANCE



P 01

The interior face of the Gatehouse Range (1842 with later additions)



P 02

The front elevation of the Gaoler's House/Governor's House (1842-1866 with later additions)



P 03

Female Hospital (1859 with later additions)



P 04

Cell Wing 1 (1842)



P 05

Cell Wing 2 (1842)

SIGNIFICANT BUILDINGS AND STRUCTURES CONTINUED



P 06
Interior of Cell Wing 3 (1842)



P 07
The yard between Cell Wings 2 and 3 (c1860s)



P 08
The Cookhouse (c1865 and 1896)



P 11
The Chapel (1908)



P 12
The Workshop Range (1866), largely rebuilt in the 1970s after a fire.



P 13
The Dead House (1864)



P 14
Muster Ground (1860s)



P 17
Cell Wing 4 (1888)



P 18
Cell Wing 5 (1884)



P 19
Cell Wing 6 (1899)



P 20
5 Wing Annex/Store (1910-1911)



P 21
Recreation Yard (1880s)



P 22
Mason's and Carpenter's Workshop (1890s)



P 25a
Sandstone Perimeter and Compound Walls constructed over a number of stages (1837, 1863 and 1880s)



P 25b
Brickwork Perimeter Wall (1922) constructed to replace a sandstone perimeter wall that was demolished in 1918



P 26

The Watch Towers that have been significantly modified since their initial construction in the 1860s (1860s-1970s)



P 30

Deputy Governor's Residence (1902) now part of the Parramatta Transitional Centre for Women



P 32

Governor's Residence (1902) now part of the Parramatta Transitional Centre for Women



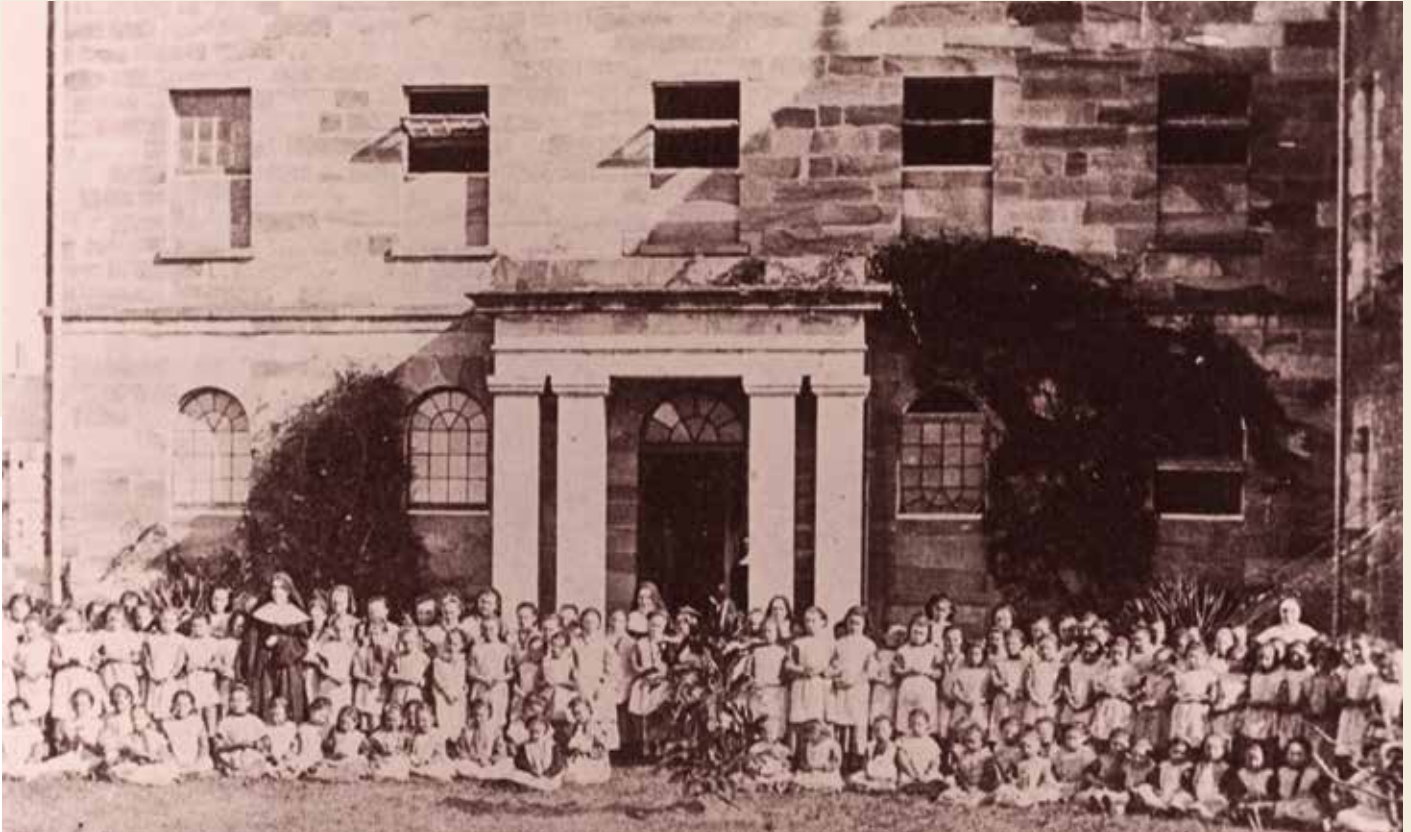
Aerial photograph of Parramatta Gaol in 1943, showing its full extent including the farm at the north end.

NORMA PARKER CENTRE KAMBALLA SITE



c1887 Entry door in compound wall enclosing south side of courtyard.

The Norma Parker Centre/Kamballa site is of exceptional heritage significance for its important role in the institutional care of children and young women over a 164 year period.



A c1868 photograph of the orphans and sisters in front of the 1844 Main Building, which housed the original dining room, school room and dormitories.
Source: Society of Genealogists

The site retains most of the buildings of the Roman Catholic Orphan School, the first and only purpose-built Roman Catholic orphan school in NSW (and possibly Australia). It is also the site of the Parramatta Industrial School for Girls (incorporating the Parramatta Girls Training Home in 1912), the longest functioning reformatory for girls in NSW, and the Norma Parker Correctional Centre, the first low security women's prison in NSW.

It is the only site in NSW to have undergone this progression of unique uses.

The place provides evidence of the changing philosophy behind social welfare and moral reform as well as an appreciation of the lives of generations of children and young women for whom it was home.

The site has become a place of memory and has been recognised as an International Site of Conscience by the Parragirls.

The site is a key element of the group of government sites along the Parramatta River, including Old Government House and the Domain (Parramatta Park), Cumberland Hospital (East Campus) site, Wisteria Gardens and Parramatta Gaol.



1. A c1864 photograph of the Roman Catholic Orphan School from the sandstone quarry on the other side of Fleet Street. Source: Society of Genealogists
2. The landscape of the courtyard 1910. Source: The Parramatta Industrial School Official Handbook
3. 1910 photograph of the girls working in the laundry of the Parramatta Industrial School for Girls. Source: State Library of NSW



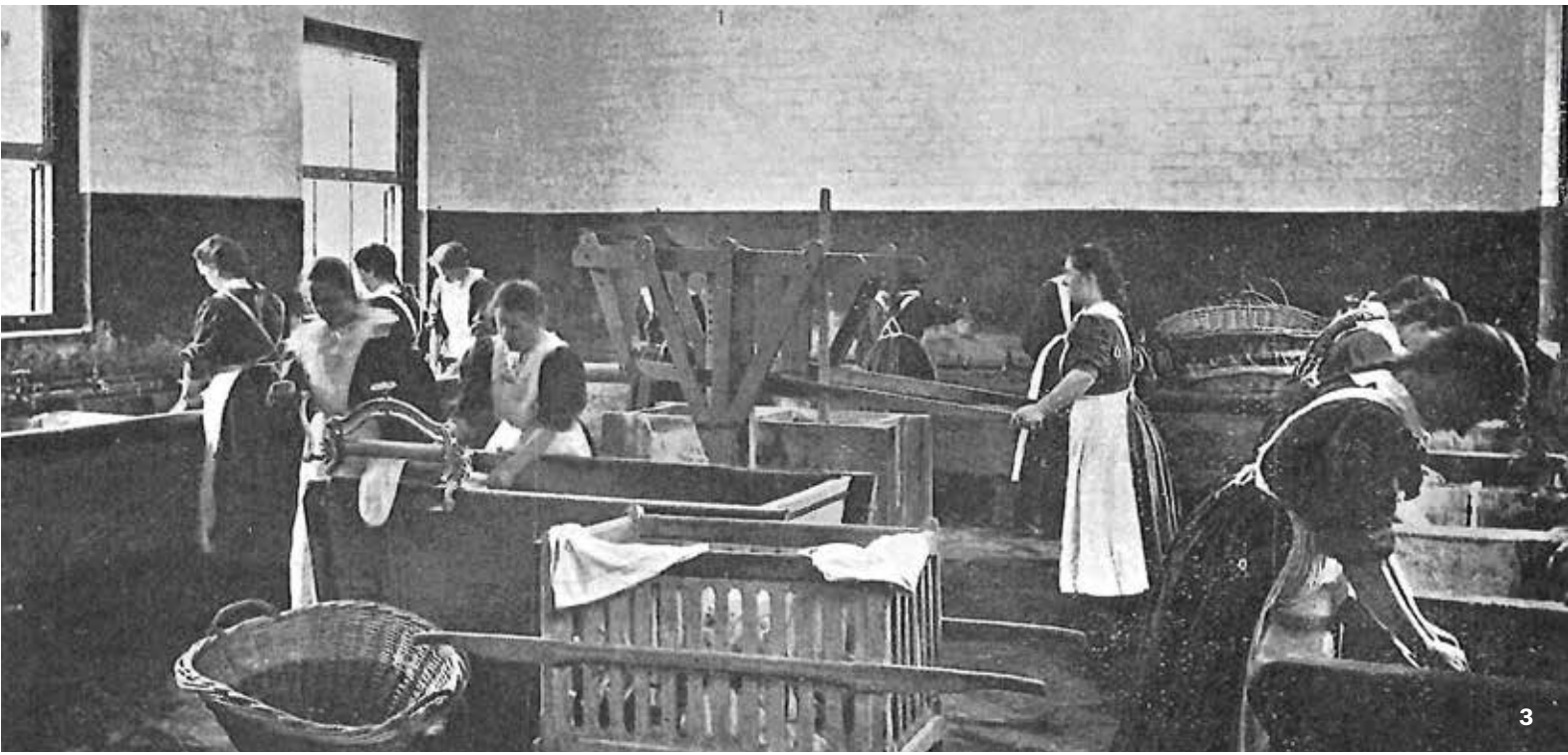
4. Interior of one of the dormitories in 1965.

The Norma Parker Centre/Kamballa site forms part of the 105 acre grant to William Bligh of 1806 that was later cancelled and reincorporated into the Government Domain.

Between 1841 and 1843 an orphan school for destitute Roman Catholic children was established by the Colonial government on land next to the walled enclosure of the Solitary Cell Block Enclosure of the Female Factory.

The complex included a three-storey Main Building, a separate kitchen and servants wing with attached privies some distance to the rear all located within a walled enclosure.

The central portion of the Main Building was designed by Henry Ginn of the Colonial Engineers who was also responsible for the Garrison Church in the Rocks. 1841 plans show that the basement was originally intended as the dining room, the ground floor a school room and the first and second floors as dormitories.



3

Initially managed by lay staff paid for by the Colonial Government, from 1859 the school was managed by the Sisters of the Good Shepherd of Australia (later the Good Samaritans) who operated the school up until its closure in 1886.

Following the closure of the Male Orphan School at Cabramatta in 1850 and the transfer of boys to the Roman Catholic Orphan School, additional land was purchased and new facilities built including the courtyard buildings and the covered way (1850-1858), Gate Keeper's Lodge (1858), Infirmary (Hospital) (1862-1863), Laundry (1860) and the North Wing of the Main Building (1867).

The constant struggle for funds to maintain the orphanage and to expand to meet growing demands, led to overcrowding and the buildings falling into disrepair. In 1870 there were 318 children in buildings designed to accommodate only 250.

In 1882 the south wing of the main building, the east end of the kitchen and the existing laundry were built.

In 1881 the State Children Relief Act was passed which aimed to board children with families instead of keeping them in orphanages. This reduced the need for the orphanage and it eventually closed in 1886.

In 1887 the site was transferred to the Department of Public Instruction to establish the Parramatta Industrial School for Girls – a child welfare institution for neglected children committed to the care of the state. It was at this time that additional security measures were implemented at the site including the high brick perimeter wall and internal compound walls.

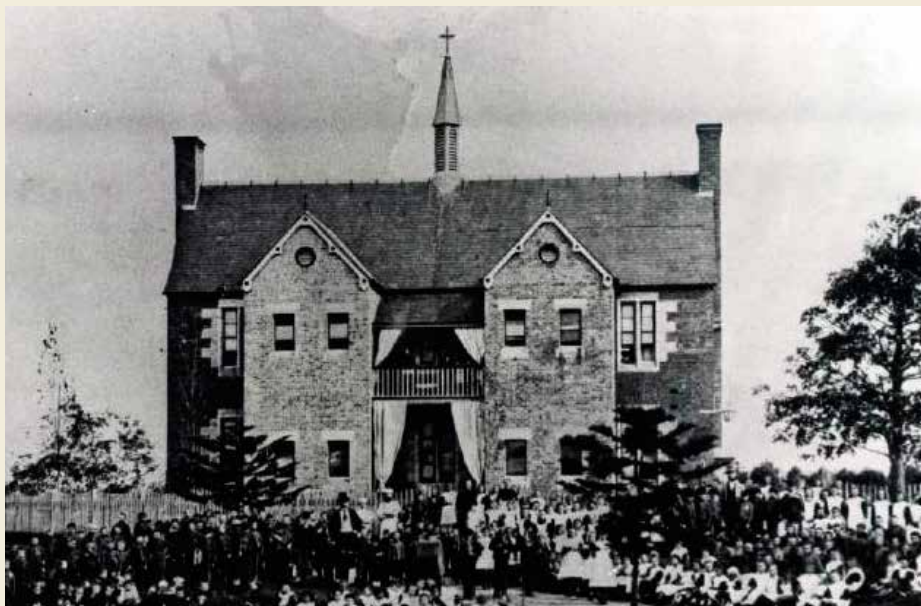
As a response to riots in 1887 and 1889 additions were made to an existing isolation cell range, located between the Hospital (later Bethel House) and the Kitchen Range. Efforts were also made to

improve conditions – food was enhanced in terms of quality and quantity, a room was set aside for evening amusements with a piano and small library, and the better behaved girls were permitted under supervision to attend local churches on Sundays. Inmates were also classified according to age and behaviour, “and every effort is being made to separate the good from the bad, and to keep the sources of contamination as far as possible away from the better-disposed and less vicious children.”

In 1912 an attempt to separate ‘unruly’ girls from the general population within the school, saw the establishment of a Training Home in the former hospital building ‘Bethel’ and the remainder of site renamed the Girls Training School. Essentially this created an institution within an institution each with autonomy accountable to the Department of Public Instruction.



1. 1910 View from Fennel Street. Source: The Parramatta Industrial School Official Handbook
 2. Sewing class. Source: State Library of NSW

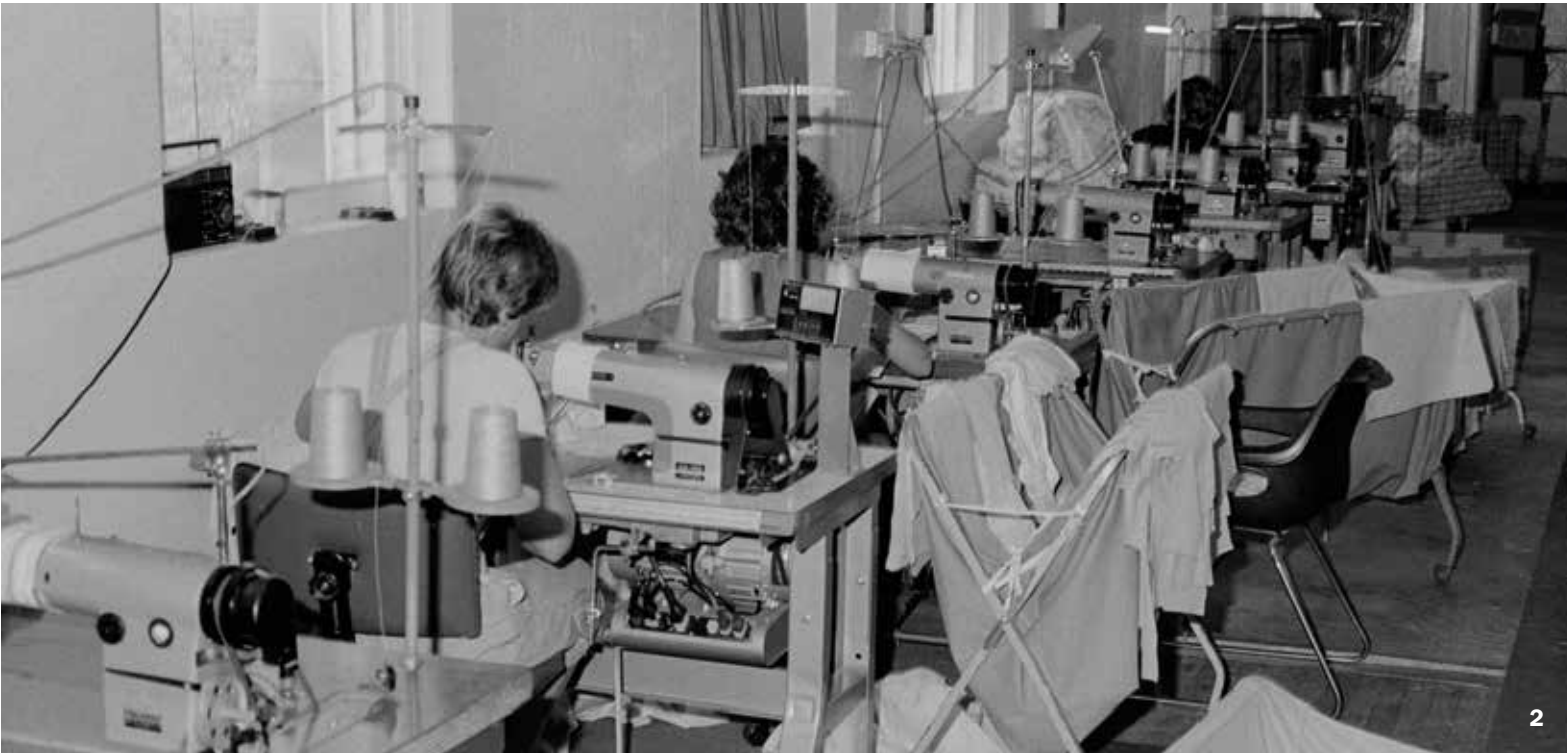


3. Circa 1870 photograph of children in front of the Infirmary (later Bethel House).
 Source: Parramatta Heritage Centre.

By 1923 this arrangement came to an end and the separate Training Home closed. With the passing of the 1923 Child Welfare Act provision was made for younger children to be placed in newly established institutions. This trend continued and by the late 1930s the qualifying age for girls admitted to Parramatta was between 11 and 18 years.

Between 1905 and 1923 an average of 60 girls per year were admitted to the Industrial School. During this time the Industrial School held a yearly average of 120 residents who had been committed to the institution. An additional 'in transit' population averaging around 300 girls per year were also held here while on remand or awaiting a Court hearing. Post WW1 saw an increase in the incidence of venereal disease and in 1926 a special treatment clinic 'Keller House' was built in the School grounds.

For many years there was relatively little physical change on the site. In terms of



2

recreation, however, the installation of a bio box in the chapel during 1926 allowed moving picture screenings. The former infirmary was named Bethel House in 1929, in honour of Walter Bethel (1878-1941), President of the State Children's Relief Board from December 1923 to February 1929. Bethel apparently considered Parramatta his "special project – a place of moral intervention for girls who had lost 'all promise fair.'"

In the 1930s dormitories were added to the Clinic Building together with a new service building in front of Keller House and this section of the institution was designated for admissions. Upper rooms in Bethel were used as privileged dormitories for girls who attended college or worked outside the institution. A new isolation cell block was built near the main building with the former cell block utilised as a school room and the earlier boys lavatory/ablutions building converted to a sewing room.

Stipendiary Magistrate John McCulloch carried out enquiries into child welfare during 1934. In one report the School was described as: ...century old, ill-designed, ill-adapted, and wholly unsuitable with the buildings 'gaol-like' firetraps which had not changed since the 1920s apart from the recent addition of a dormitory wing and showers to the clinic, alterations to the shower room in the main building and a residence for the Superintendent.

Riots and disturbances were a frequent occurrence with the first recorded in 1889. According to a former officer, for every riot that was reported there were at least 12 more. During WW2 a succession of riots broke out, following investigations recommendations were made which could have improved conditions at Parramatta, but economy prevailed and no changes were made except the creation of a two cell segregation room on the upper floor of Bethel. By the late 1950s the situation

worsened and in 1961, after a spate of riots attracting a great deal of media attention, a new Institution for Girls was established in the former Hay Gaol for girls who were considered incorrigible and in need of further 'training'. Conditions and treatment of girls at Hay and Parramatta was exposed in a special report on This Day Tonight (ABC TV) in 1973. This expose was at the behest of social justice activist Bessie Guthrie who focused the efforts of the Women's Movement in calling for reforms to the welfare system.

From 1963 a limited number of 'privileged' girls were allowed day work as domestics in private homes or other government controlled institutions. With the establishment of Minda Remand Centre in May 1966 the former admissions section was designated as privileged dormitories. One of the upper rooms in Bethel continued to serve as a transition dormitory for girls who were to leave the institution within a number of weeks.



1. Swimming pool. Source: PWD Annual Report, 1970.
2. The main building in 1983. Source: State Library of NSW.
3. c1970s Parramatta Girls Industrial School photograph of the site from Wisteria Gardens. Source: ABC News.

The late 1960s and early 1970s saw the baby boomers peak and in 1970 the highest number of girls 'in residence' at the institution was recorded.

An estimated 30,000 children passed through the institution with an average of 160 girls in residence at any given time. These figures rose during the late 1950s, 1960s and 1970s, peaking in 1970 with a recorded 307 girls in residence. In 1966, the resident population averaged around 250 with the transient population that year around 500. On average between 7 and 12% of girls were of Aboriginal descent.

A new 6 room Instructional Range was constructed in 1969. One room was utilized as a school classroom and the remainder instructional rooms for sewing and cookery. This saw the demolition of part of the eastern compound wall (1887) as well as

the sewing room (former lavatory block) and school room 9 (former cell block). Bricks – thought to be of convict era – were salvaged from the demolished buildings and auctioned to raise money towards the cost of building a swimming pool within the grounds.

From the early 1970s members of Sydney's women's movement, including the legendary feminist Bessie Guthrie, had protested about the conditions at Parramatta and its annexe, Hay Institution for Girls, and the pressure had contributed to the government's decision to amend the Child Welfare Act, as Child Welfare Minister Richard Healey said at the time, "to reflect the most positive attitudes of a modern community towards its minors and get rid of any Dickensian overtones."

A mounting series of protests about conditions at Parramatta and Hay led to their eventual closure in 1974.



Kamballa – a children's shelter for emotionally disturbed girls 15- 18 years, was established in September 1974 the main 'old home' section by which time all earlier inmates committed to Parramatta by the Children's Court had been released.

In January 1975 Parramatta Girls Home was formally renamed Kamballa Girls Shelter and Taldree Boys Shelter. Taldree occupied the former admissions section (Keller House and Bethel) providing short term accommodation for boys 11 to 16 years of age who were awaiting a final court appearance. With the ownership of the site transferred to NSW Corrections and the subsequent establishment of the Norma Parker Detention Centre for Females in 1980, Taldree was relocated to Werrington Park and Kamballa occupied the former admissions section.

The centre was named in honour of a pioneering and influential figure in Social Services and child guidance, Norma Parker (1906-2004), whom resided at the school for a short period of time at the beginning of 1943. The centre became a minimum-security prison that also housed women in a work release program. This was the second facility in New South Wales for incarcerated women and was the first low security women's prison in the State. The focus for the centre was upon 'education, work and recreation programs'.

The facility consisted of three separate accommodation areas – 'Winmill Cottage', 'Morgan House' and residential accommodation above the offices in the main building for women on Work Release. In 1983 Kamballa also relocated off site and Bethel House, the 1930 Hospital Block and the 1969 Instructional Range were adapted for administrative offices for the centre.

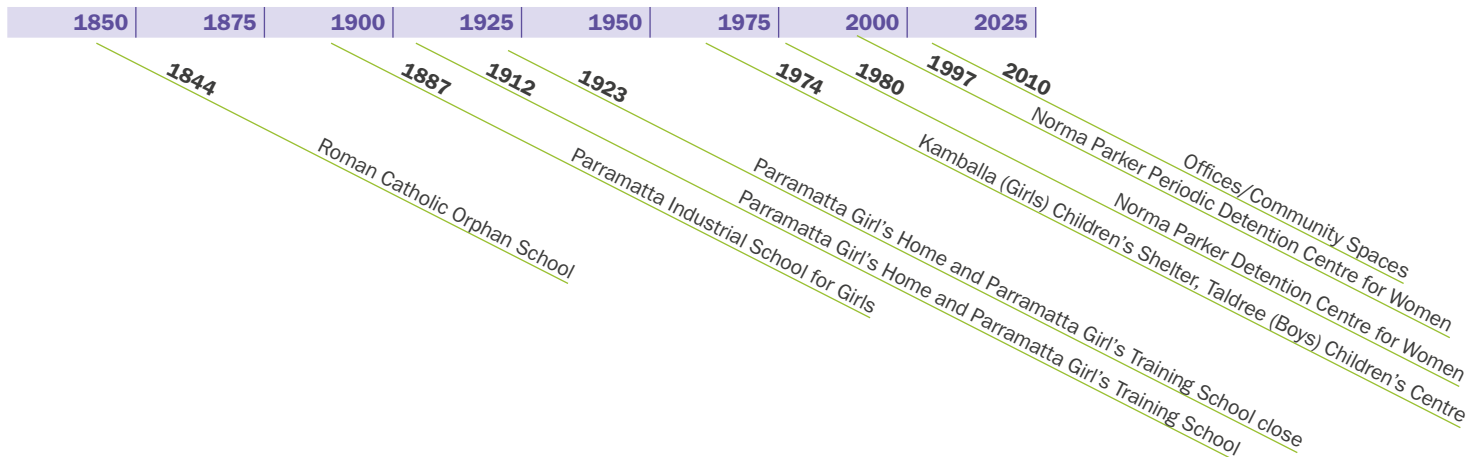
The correctional centre closed in mid-1997 but re-opened later that year as the Norma Parker Periodic Detention Centre to replace the Merinda Periodic Detention Centre that was established on the Department of Corrective Services land at the north end of the Cumberland Hospital (East Campus) site in 1978. The centre closed in 2008 but continued to be used for administrative offices until 2010.

A fire in 2012 caused extensive damage to the Southwest Range and Chapel. Restoration works to both buildings were completed in 2016. Today most of the former orphanage buildings are vacant. Four rooms in the 1969 Instructional Range are occupied by the Parramatta District Men's Shed, one room is used by Parragirls – Parramatta Female Factory Precinct Memory Project who have also set up an interpretation and exhibition area in Bethel.



Cookery instruction class at the of the Parramatta Industrial School for Girls, 1910. Source: The Parramatta Industrial School Official Handbook

CHRONOLOGY



SIGNIFICANT COMPONENTS

The following cultural landscape elements will be retained:

- *Araucaria heterophylla* (Norfolk Island Pines) and other extant 19th and early 20th century plantings
- Setting of significant buildings
- Significant views from Parramatta Park and Fleet Street

All eight buildings of exceptional or high significance will be retained, conserved and adapted. They are:

- N 01** Main Building (1844 with 1867, 1882 and 1980s additions)
- N 02** Covered Way (1858)
- N 03** Southwest Range (c1850 with 1858 and 1882 additions)
- N 04** Chapel (c1864)
- N 05** Laundry (1882)
- N 06** Bethel House (1862–1863)
- N 07** Gate Keepers Lodge (1858)
- N 08** Sheds/Outbuildings (1880s)

Other significant structures include:

- N 18** Sandstone and cast iron palisade fence on Fleet Street (c1860s and 1870s)
- N 17** Brick perimeter walls on the west and south sides (1887 and 1893)
- N 15** Internal compound wall remnants (1887)

The site has some potential to retain archaeological evidence of the mill water race associated with the Government Mill; original orphan school kitchen block, toilet blocks and perimeter walls; in-ground wells and later (now demolished) brickwork compound walls.

CULTURAL LANDSCAPE

By the late 1870s the cultural landscape of the Norma Parker Centre/Kamballa site included plantings of *Araucaria* species and these tall Australian conifers, now up to 30 metres in height survive as significant landmarks on the site.

The specimens of *Araucaria heterophylla* (Norfolk Island pine), *A. bidwillii* (Bunya pine) and *A. cunninghamii* (hoop pine) have historical, aesthetic and horticultural values that make a major contribution to the importance of the place.

Other ornamental tree specimens within this precinct with high aesthetic significance include an outstanding specimen of *Jacaranda mimosifolia* (jacaranda) and two fine specimens of *Citharexylum spinosum* (fiddlewood).

In the riparian corridor of the Parramatta River, is regrowth of the indigenous vegetation community River Flat Eucalypt Forest which provides habitat for a colony of the protected native *macrobat Pteropus poliocephalus* (grey-headed flying fox).

SIGNIFICANT BUILDINGS AND STRUCTURES



N 01

Main Building (1844 with 1867, 1882 and 1980s additions)



N 02

Covered Way (c1858)



N 03

Southwest Range (1850s with 1858 and 1882 additions)



N 04

Interior of the Chapel (c1864)



N 05

Laundry Building (1882)



N 06

Bethel House (1862-1863)



N 07

Gate Keeper's Lodge (c1858)



N 08

Sheds/Outbuildings (c1880s)



N 17

Perimeter Walls (1887 and 1893)



N 15

Compound wall remnants (1887)



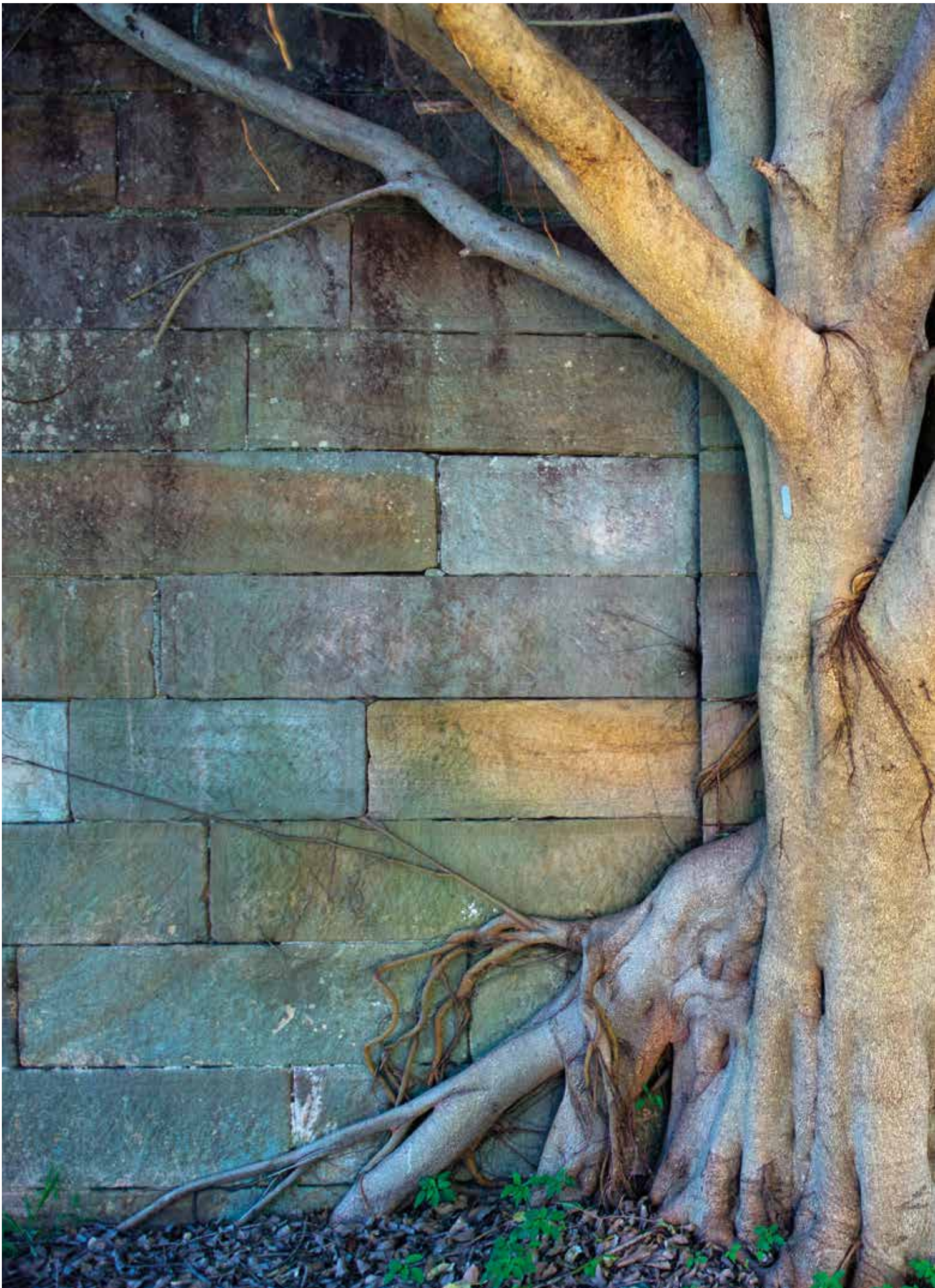
N 18

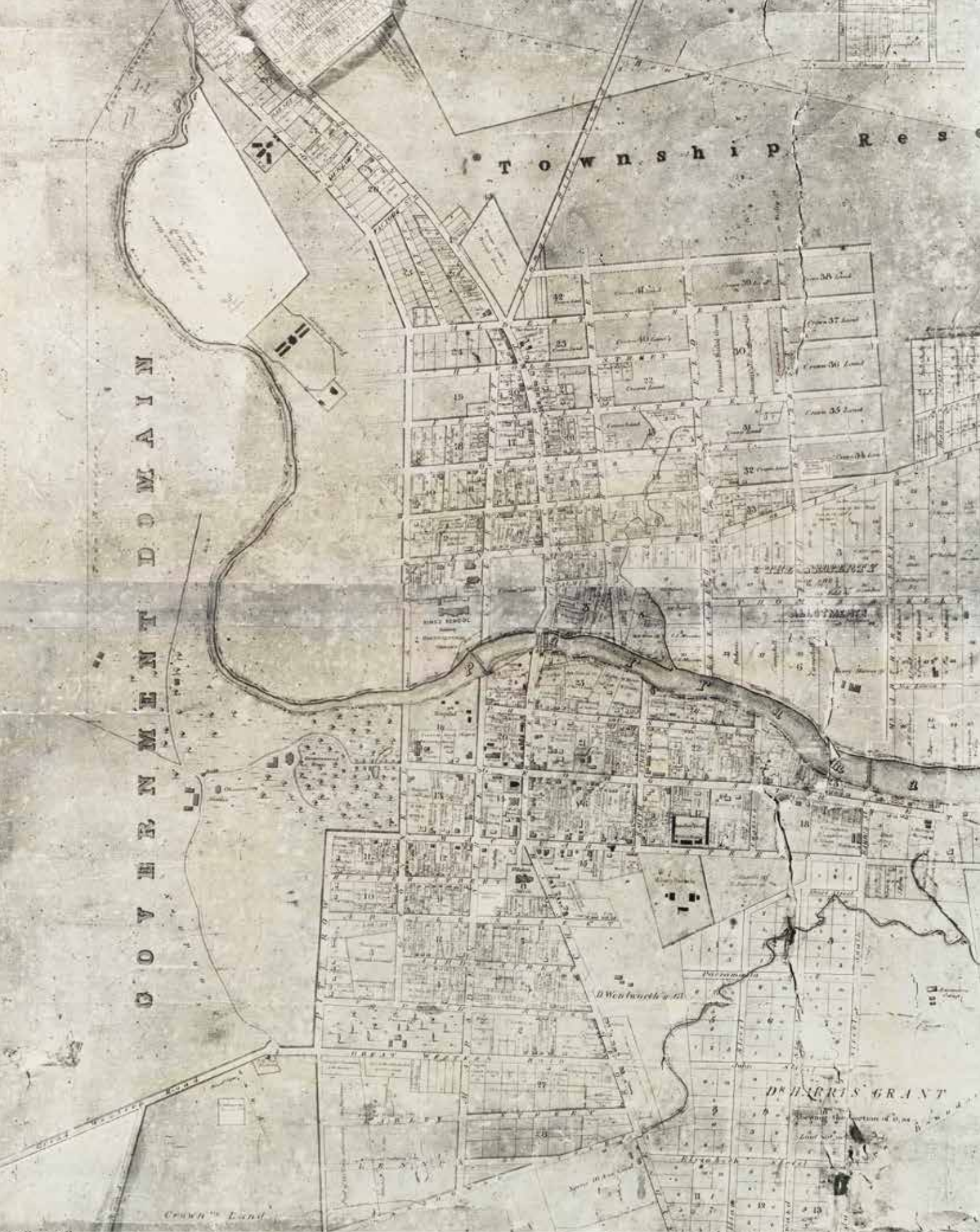
Palisade fence (1860s-1870)



- EXCEPTIONAL HERITAGE SIGNIFICANCE
- HIGH HERITAGE SIGNIFICANCE

The significant buildings and structures to be retained, conserved and adapted.





Where can I find out more?

1800 256 330

parramattanorth@urbangrowth.nsw.gov.au

urbangrowth.nsw.gov.au/parramattanorth